

Alec Farmer

Arkansas Highway Commissioner



Jonesboro Rotary

Tuesday, September 27, 2016

AHTD & AHC



History



Prior to 1913

“We are always yapping about the ‘Good Old Days’ and how we look away back and enjoy it, but I tell you there is a lot of hoey to it.”

– Will Rogers



<http://rustlingsinthewind.blogspot.com>



The Teens

- ***First Commission Created***
 - ✓ ***No Highway Department***
 - ✓ ***No Highway System***
- ***\$72,000 Total Budget***
- ***36,000 Miles of Public Roads***

Highway 71 near Bella Vista



The Twenties



Repair Shop of State
Highway Department,
Little Rock, early 1930s



- **Highway System Created**

- **Highway Department Created**

- **First Gas Tax – 1 cent per gallon**

- **200,000 Vehicles/8,800 highway miles (1,400 Paved)**

- **Highway Commission Structure Changed Twice**

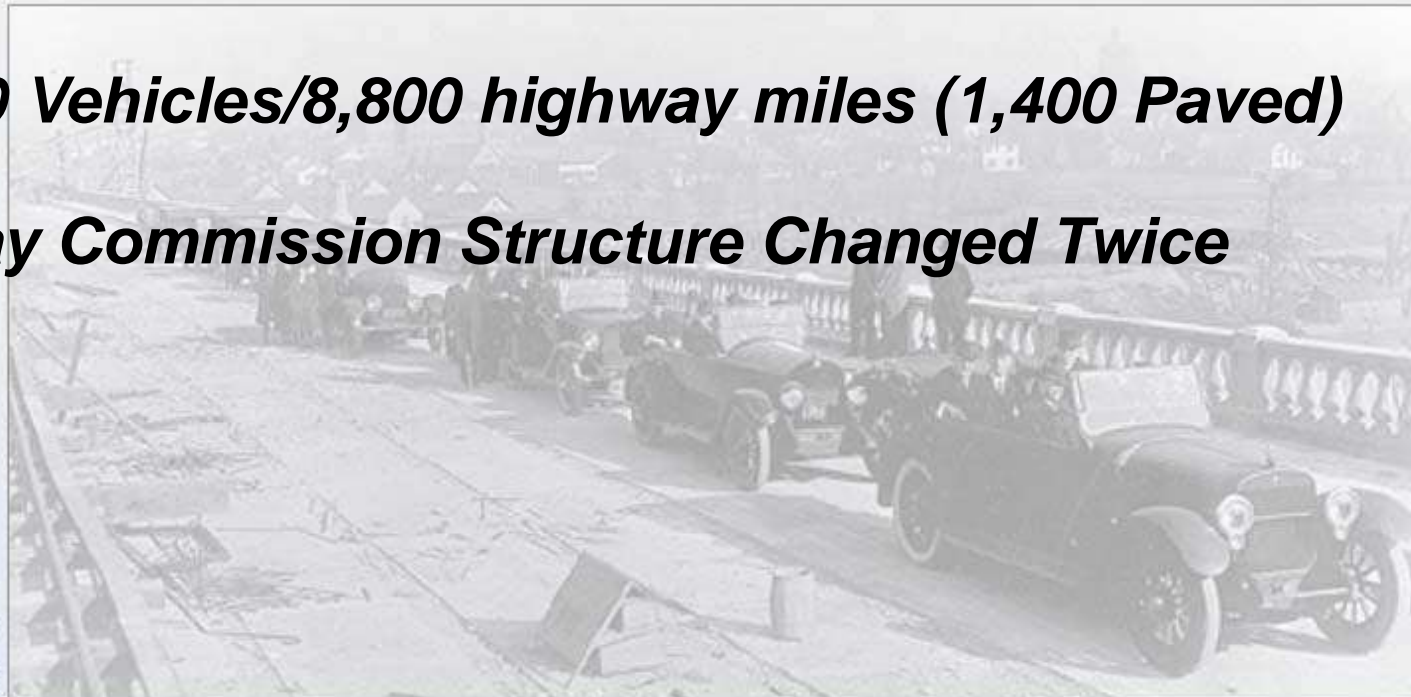
Highway Districts 1923



Highway Districts 1925



Broadway Bridge dedication,
1922. View is looking towards
North Little Rock





The Thirties and Forties



Operation of the Henderson Ferry at Norfolk Lake cost \$117,981 for 1947-48.

During this period 189,856 vehicles were ferried over at an average cost of 6.5¢ per vehicle.

- **Gas Tax Raised to 6.5 cents per Gallon**
- ✓ **1960's Before Next Increase**
- **Commission Structure Changed Two More Times**
- **9,700 Highway Miles (4,900 Paved)**



- **Commission Structure Changed Two More Times**
- **Too much Political Influence on Highways**
- **Growing Discontent**



Magnet Truck, Picked up an average of 20 lbs of metal per mile



The Fifties



- **1951 - Highway Audit Commission Report**

- ✓ **“the advice, counsel and expert know-how which is available from the Department’s own technical and administrative staffs has scant weight indeed when they are in conflict with the political pressures and political promises of the moment.”**

- **9 Legislative Acts Restructured Commission since 1913**
- **1952 – Mack Blackwell Amendment**

Widening Hwy 67 near Malvern, 1956





The Sixties and Seventies

- ***No changes to Commission Structure***
- ***Department became Debt Free***



- ***Legislature transferred nearly 4,400 more miles of County Roads to Highway System***

South Terminal, Lawrence Blackwell burning bonds at a ceremony in 1975.

- ***Department adds "Transportation" to its name – Authority Expanded***

- ***1st State to Complete its Interstate System (1975)***
- ***16,000 Highway Miles (15,000 Paved)***



Toad Suck Ferry on Arkansas River at Highway 60, 1970



I-430 River Bridge, 1973



The Eighties and Nineties

- **1985 – Rural Road Program – out of the mud**
- **Early Retirements – huge workforce turnover**
- **1991 – Highway Improvement Program**
- **1993 – Last Federal Gas Tax Increase**



Section of Hwy 7
named first Scenic
Byway of Arkansas.

- **1999 – Last State Gas Tax Increase**

1991 Highway Improvement Program authorized to
improve or replace approximately 560 bridges.

- **1999 – Interstate Rehabilitation Program –
First Highway Bond Issue in 50 years**

- **I-540 (now I-49) and I-530 Completed**

- **16,400 Highway Miles**

Hopper Tunnel, 1999





The New Millennium



- **2011 – 2nd Interstate Rehabilitation Program**
- **2012 – Connecting Arkansas Program**



Winter Weather in Dec 2000 and Jan 2001 cost almost \$40 M.

- **Governor's Working Group on Highway Funding**

- **16,400 miles State Highways**



New White River Bridge on Hwy 64 at Augusta opened in 2001.



Today and



Tomorrow



Matters of Scale

☰ Cra

Craighea
Arkansas

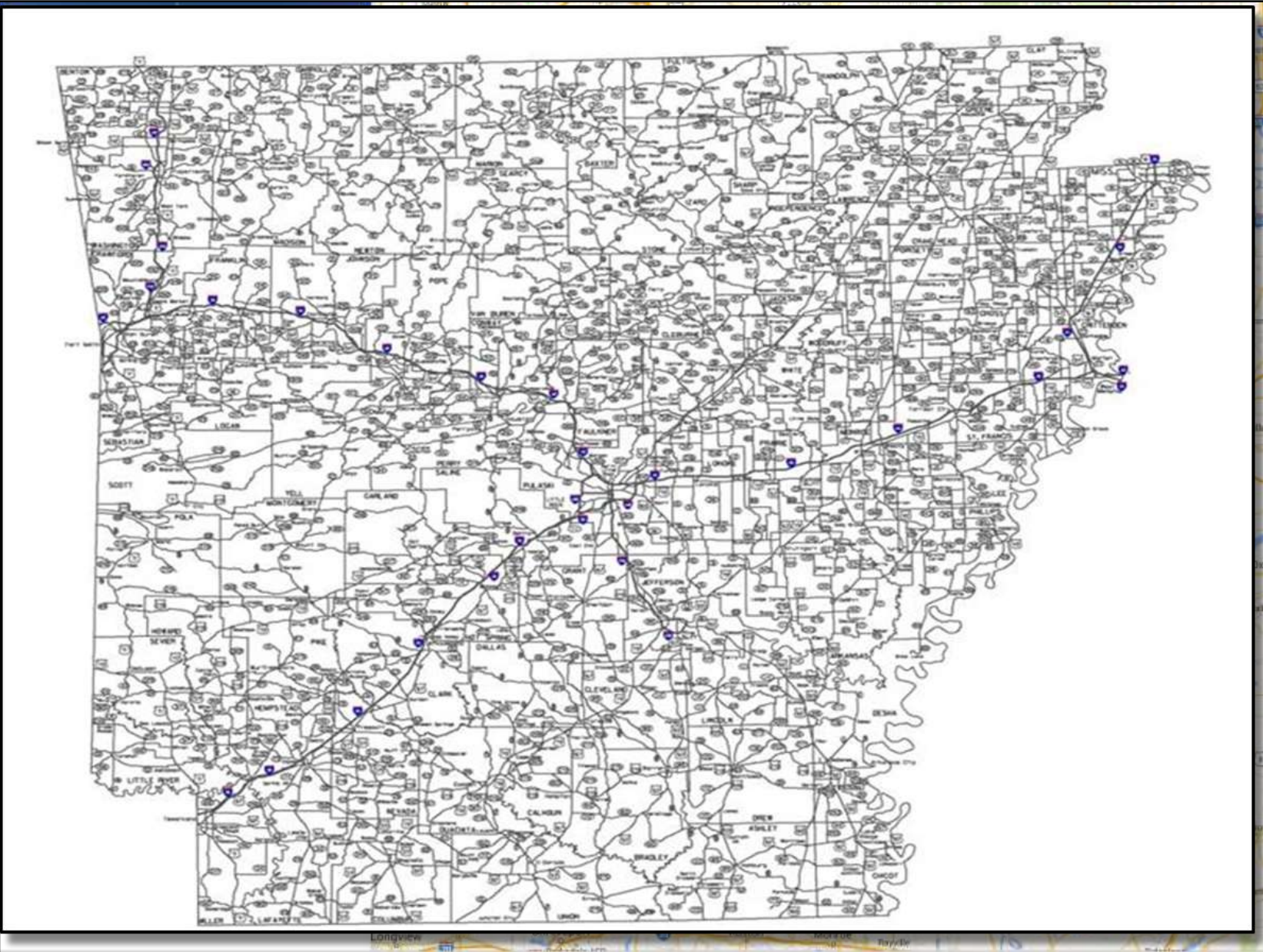
★
SAVE

Photos

Quick fact

Craighead C
Arkansas. A
The county
City. [Wikiped](#)

Population:
Area: 1,847
Founded: Fe



Cardwell

Le

ette

White

(174)

Caraway

ivale

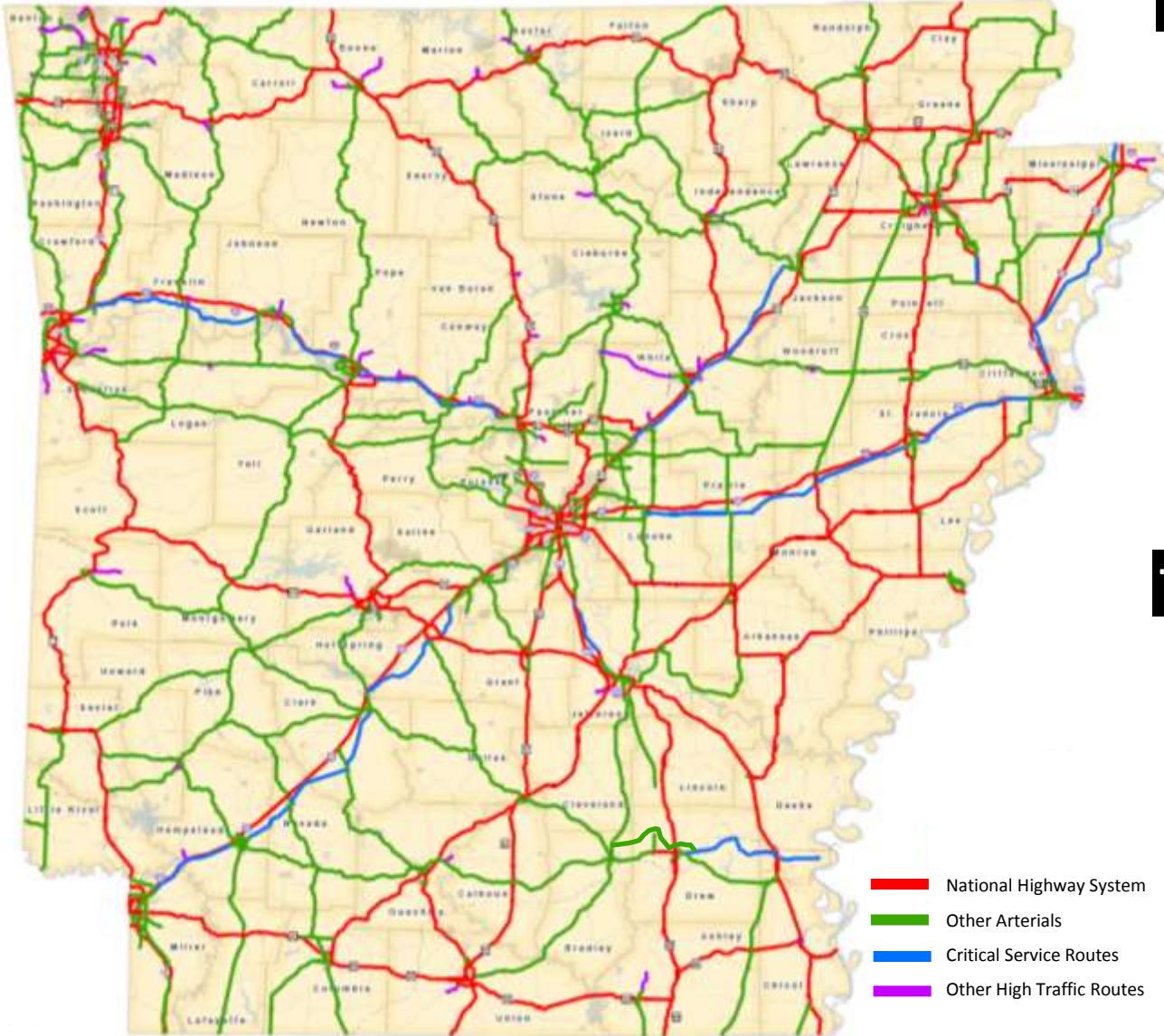
(140)

apanto

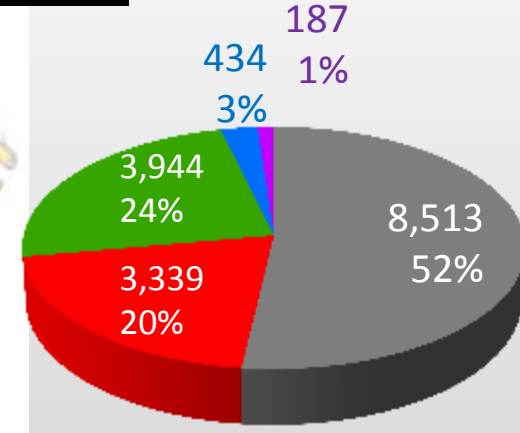
mi



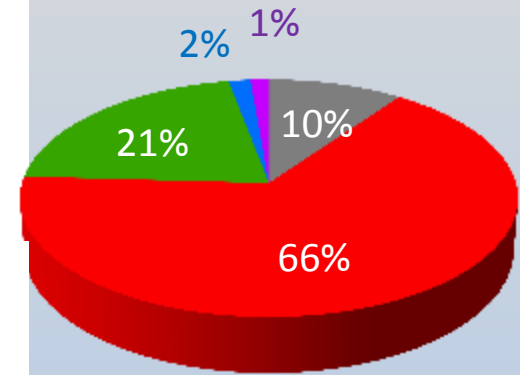
All of the APHN



Miles



Traffic



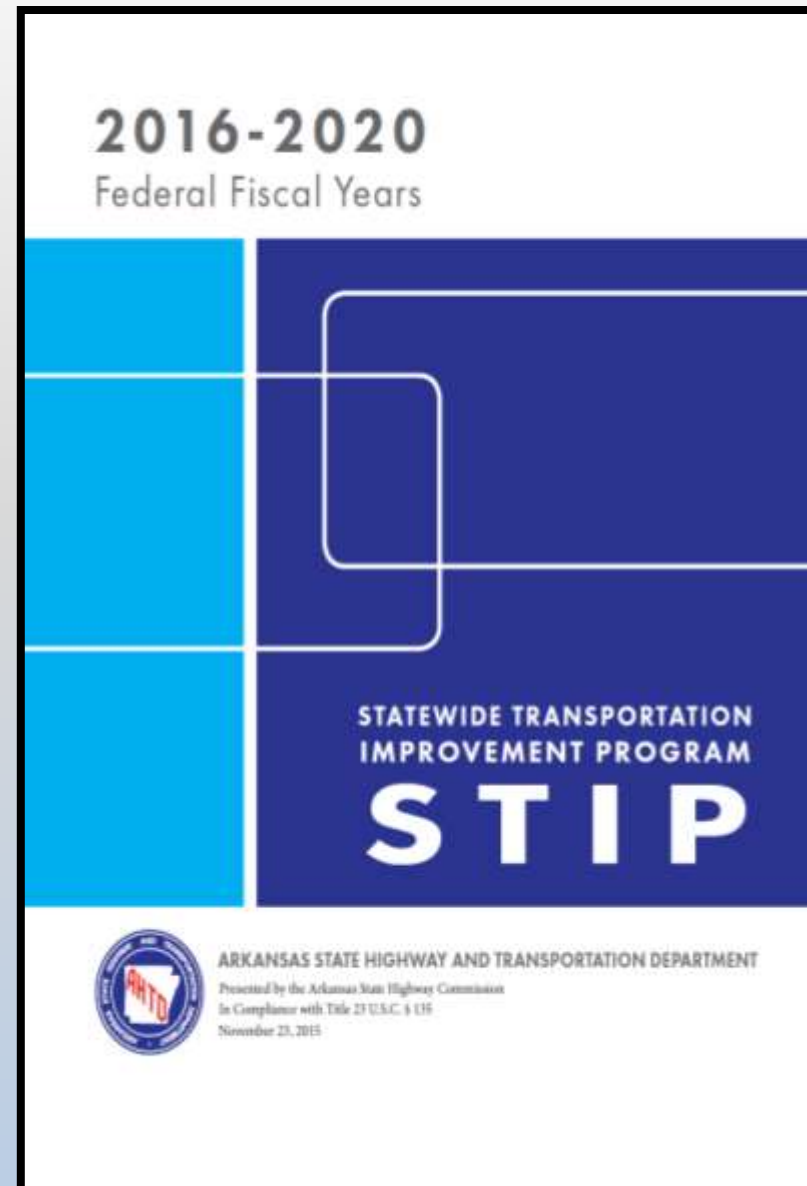


Four Lane Grid

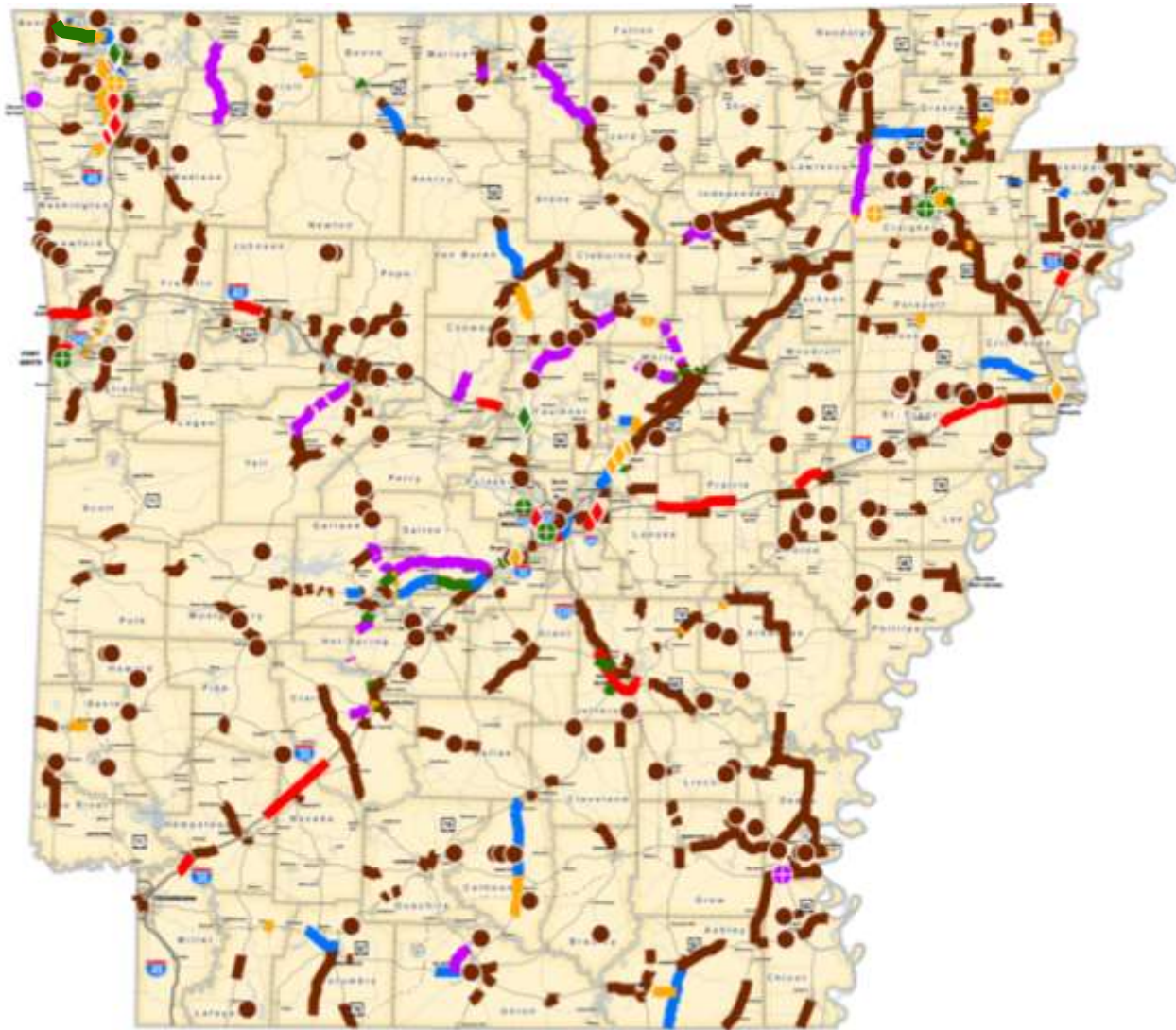


Statewide Transportation Improvement Program for Federal Fiscal Years 2016-2020 (STIP)

- Federal Requirement for Federally Funded and Regionally Significant Transportation and Transit Projects
- 4-Year Minimum
- Required Components:
 - ✓ Demonstration of Financial Constraint
 - ✓ Metropolitan Planning Organization (MPO) Coordination
 - ✓ Public Involvement
 - ✓ Performance Management



Draft 2016-2020 STIP



LEGEND

Job Type

- Bridge
- ◆ Interchange
- ⊕ Intersection
- █ Roadway
- ⋯ New Location

- █ IRP
- █ CAP
- Bridge Preservation
- Safety
- █ Pavement Preservation
- █ Capital Improvement
- █ Capacity Improvement



Regional Projects





Interstate 555



Bridge Maintenance and System Preservation

- Selected sections of I-555 from I-55 to Jonesboro
- Just under 39 miles
- Estimated between \$45 and \$50 Million





U.S. Highway 67



System Preservation from Cabot to Newport

- Selected sections of U.S. Highway 67 from Cabot to Newport
- Just under 59 miles
- Estimated between \$65 and \$70 Million





State Highway 18



Recently Completed

- 7.1 miles
- \$23 million

Under Construction

- 14.2 miles
- \$45.3 million

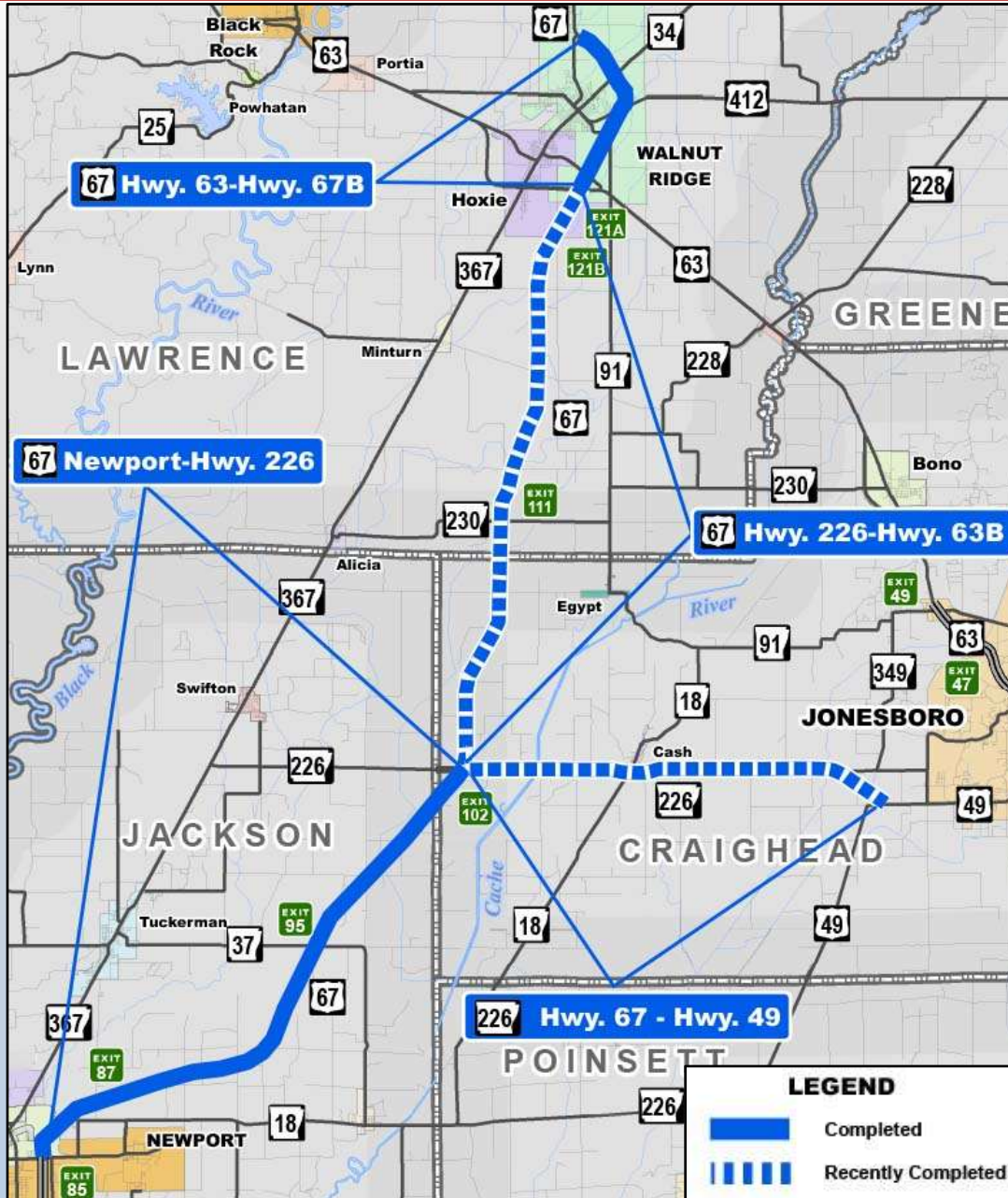
Scheduled

- 2.4 miles
- \$35-40 million





U.S. Hwy 67 & State Hwy 226



Jonesboro & Craighead County



Projects in the Future



State Highway 1-B



Programmed

- 3.1 miles
- \$1.8 million





State Highway 18



Programmed

➤ **\$14.5 million**

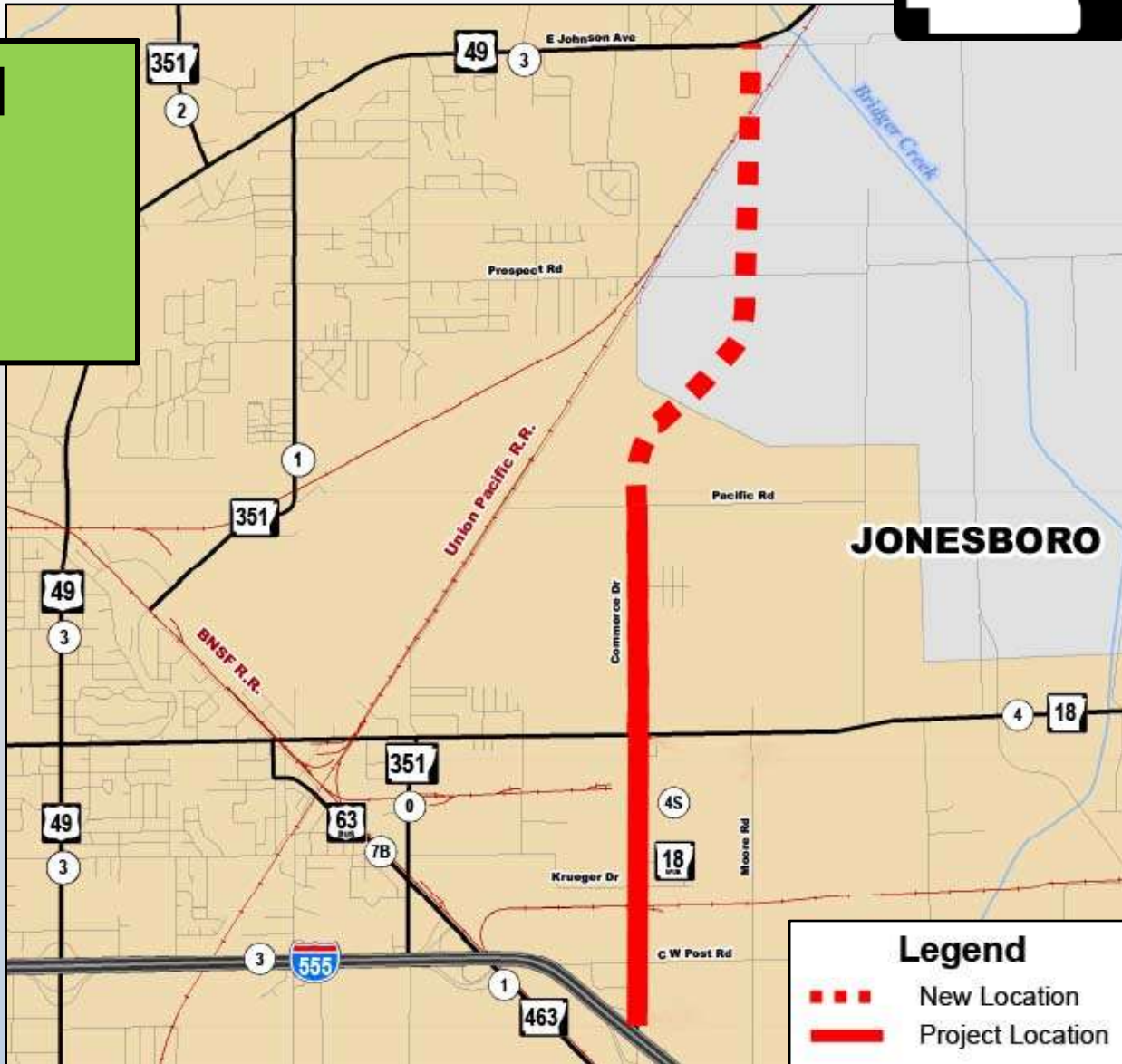


State Highway 18S



Programmed

- 4.34 miles
- \$5-10 million





U.S. Highway 49



Programmed

➤ **\$9 million**



U.S. Highway 49



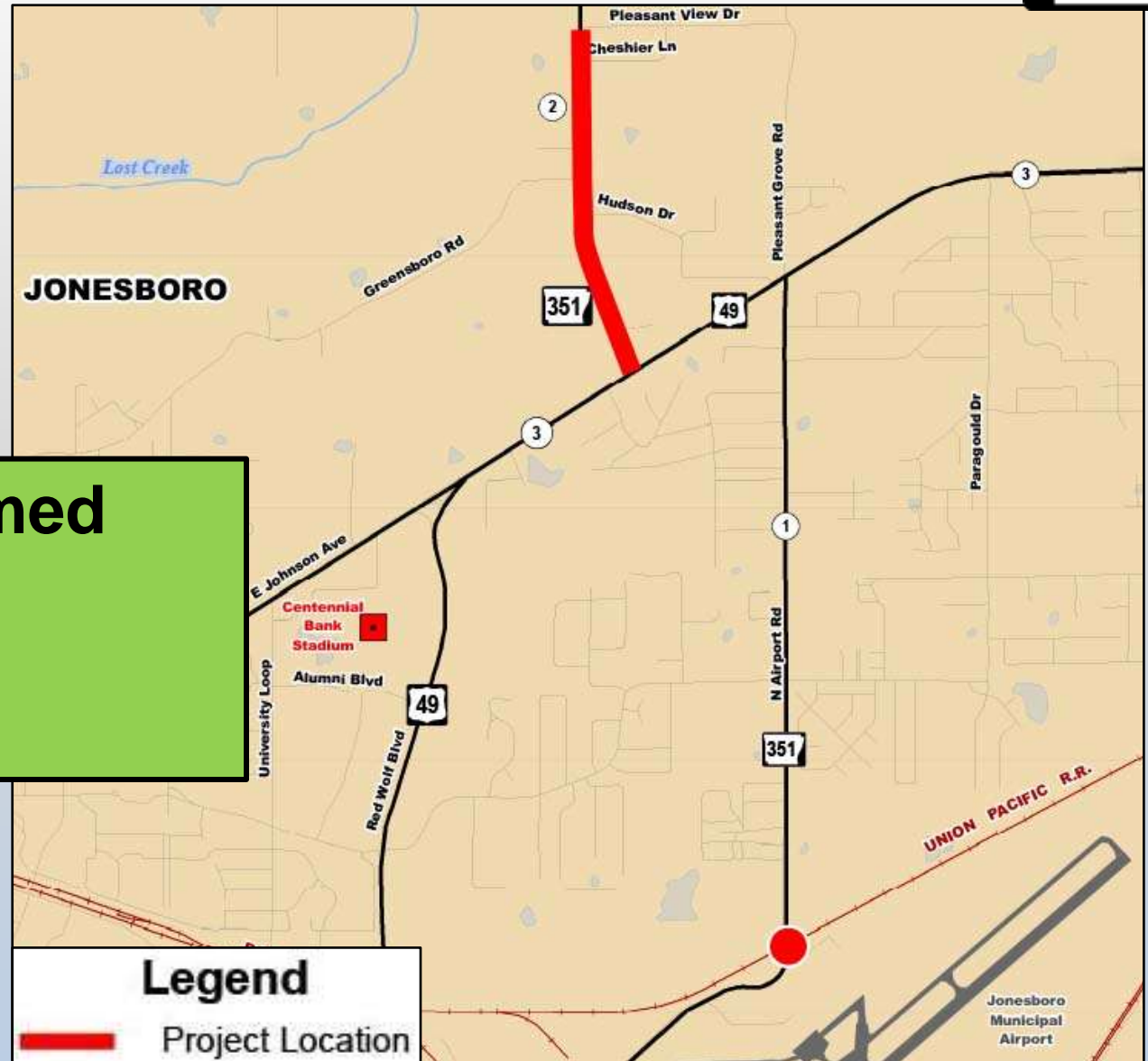
Programmed

- 1.35 miles
- \$20.4 million





State Highway 351




Programmed

➤ 0.9 miles

➤ \$14 million

Legend

 Project Location



Craighead System Preservation



14 Projects

- 32.88 Miles
- \$16.7 Million



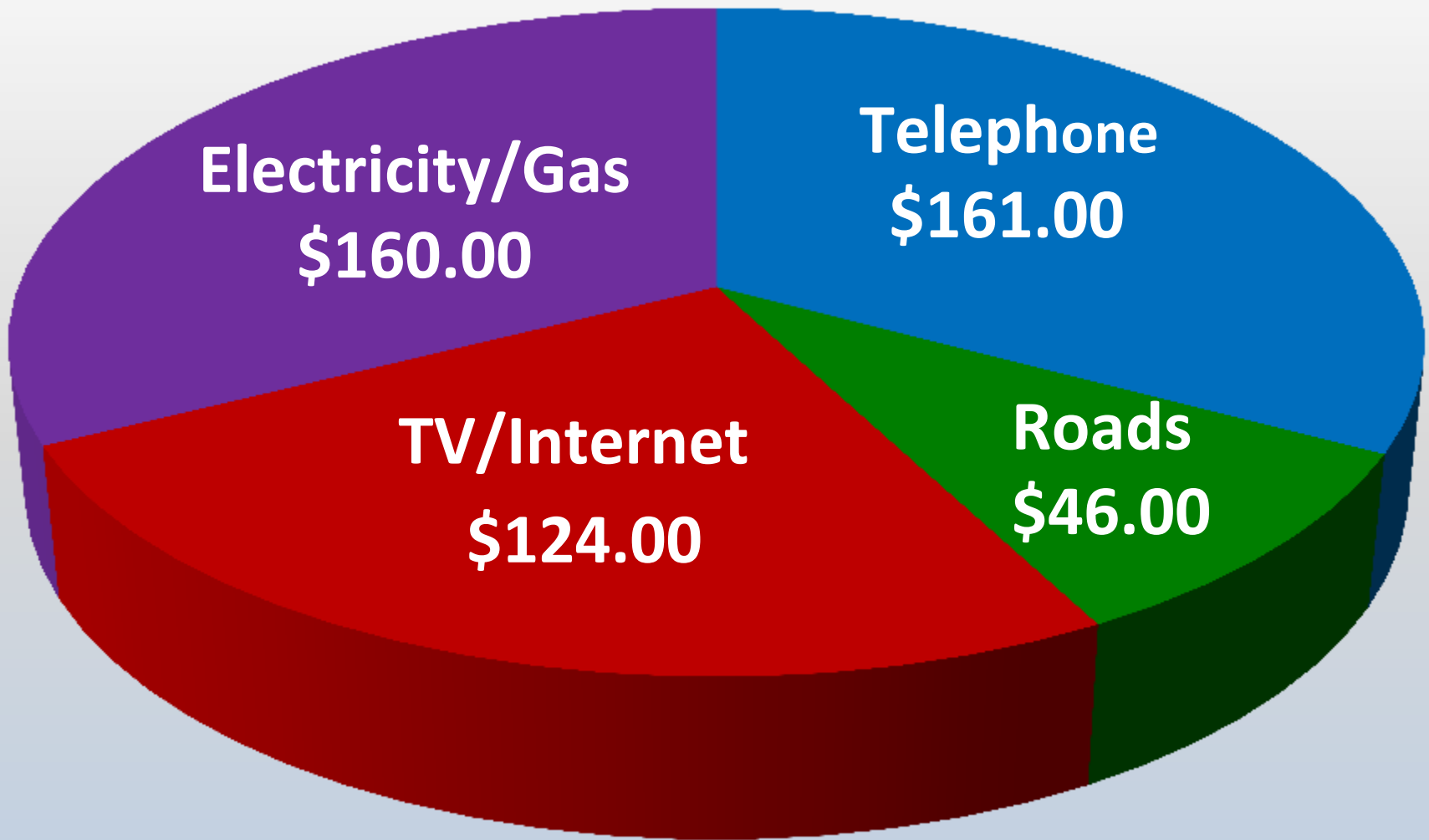
- IRP
- CAP
- Bridge Preservation
- Safety
- Pavement Preservation
- Capital Improvement
- Capacity Improvement

Funding

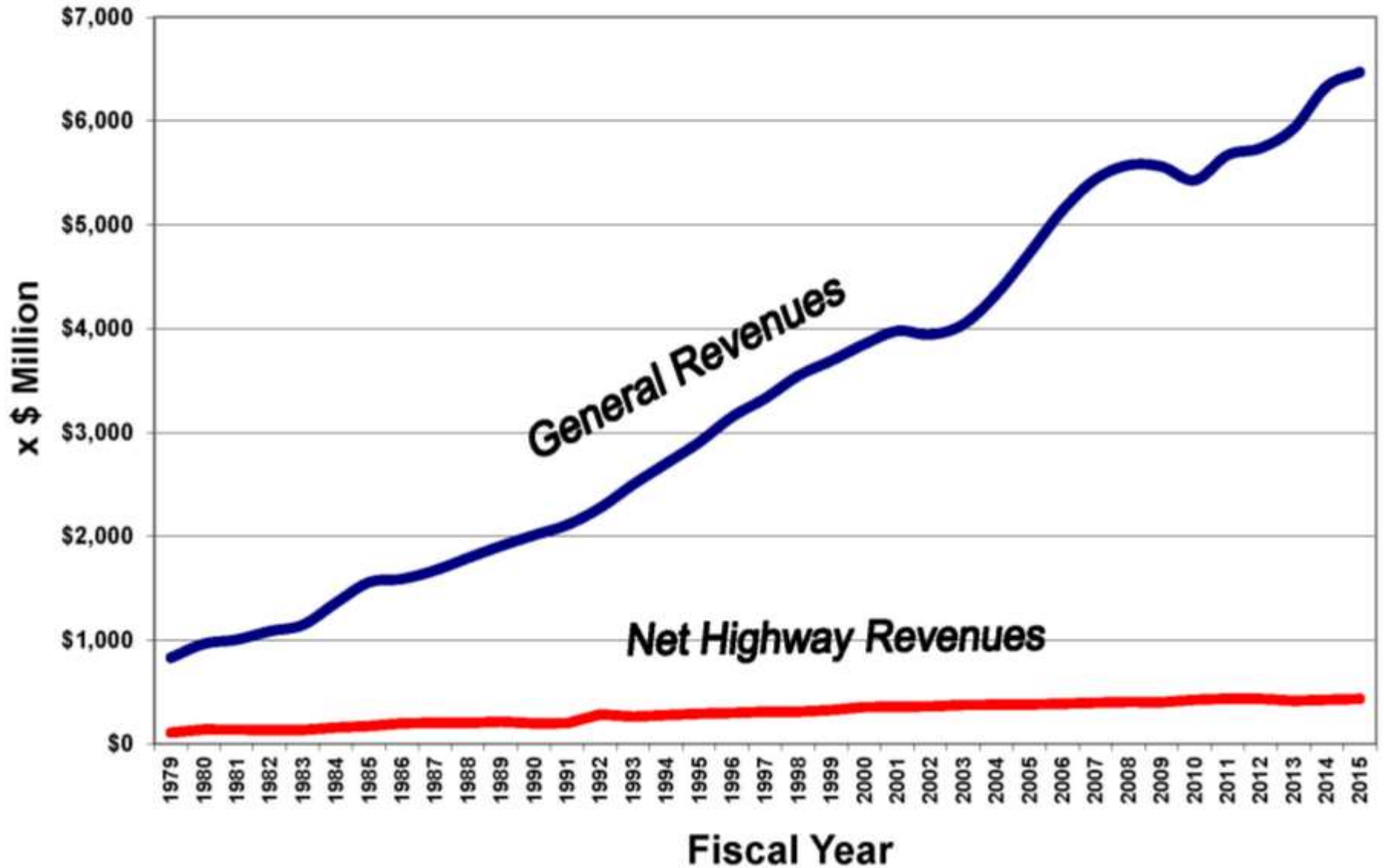




Average Monthly Household Expenditures



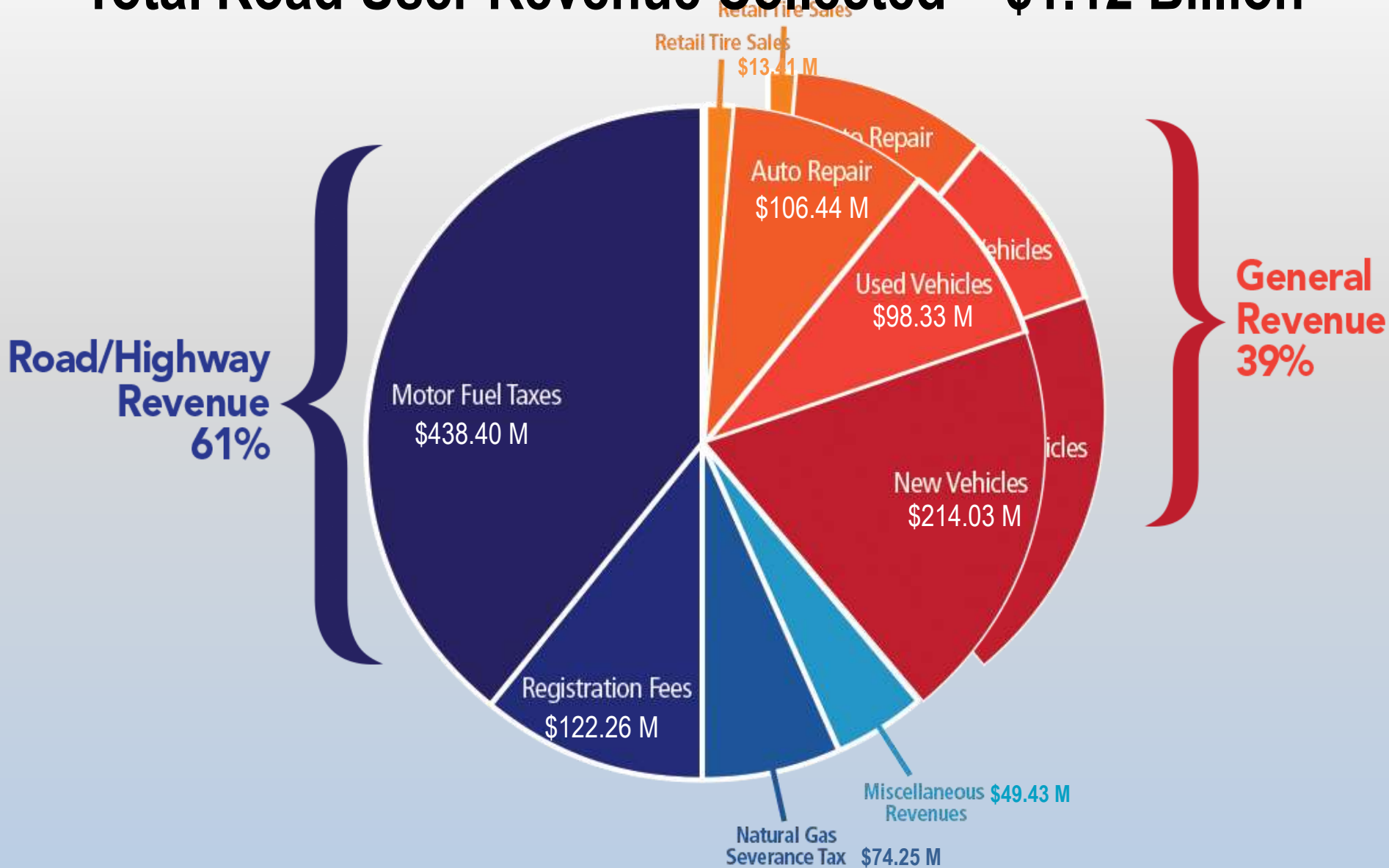
Arkansas State General Revenues vs AHTD Net Highway Revenues





2015 Road User Related Tax Revenue

Total Road User Revenue Collected = \$1.12 Billion

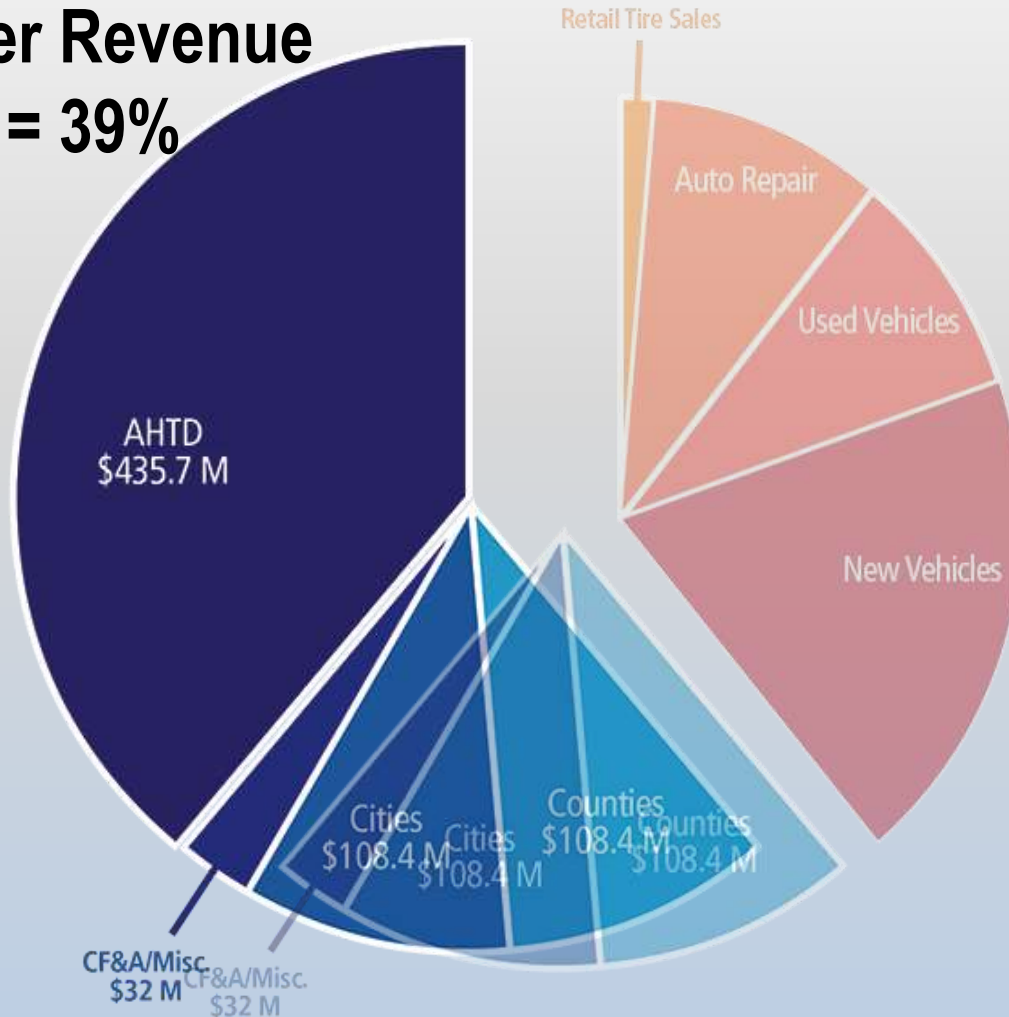




2015 Road User Related Tax Revenue

Total Road User Revenue Collected = \$1.12 Billion

**AHTD Road User Revenue
= \$435.7 M = 39%**





- ArkansasHighways.com
- ConnectingArkansasProgram.com
- Vimeo.com/AHTD
- IDriveArkansas.com
- [Twitter.com @AHTD](https://twitter.com/AHTD)



@AHTD



Questions?

